



VitalSine Security II UPM

Hot-Swap Battery Replacement Guide



Changing the batteries in this UPM is designed to be a safe and simple procedure. Batteries may be replaced while the UPM is on and providing power to the connected load. You should remember, however, that if a power outage occurs after the old batteries are disconnected and before the new batteries are installed, power will be lost to your connected system and components. Servicing of batteries should always be

performed or supervised by someone who has read and understood the following precautions and who understands the hazards associated with storage batteries. This procedure should not be performed by someone who is unauthorized or who is incapable of following these precautions.

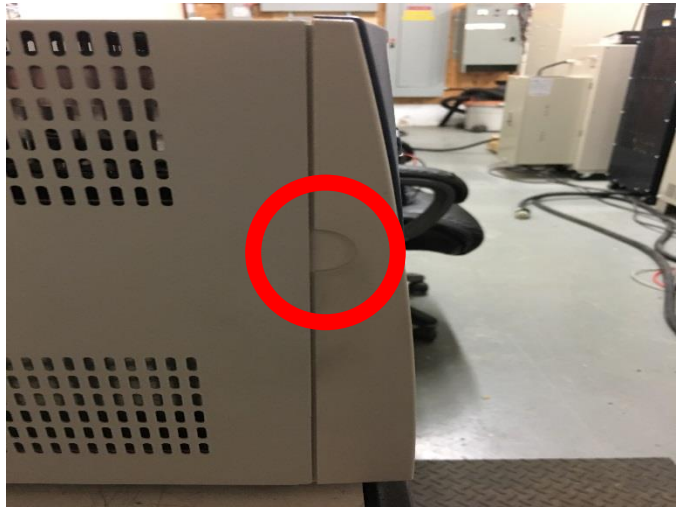
- ☞ Only the battery assembly in this unit is user serviceable. The battery compartment is accessed by removing the front panel as described in the following instructions. No other user serviceable parts are contained in this UPM. Do not remove any cover other than the front battery access panels.
- ☞ A battery (even a depleted one) can deliver very high currents when short-circuited. There is a danger of electrical shock. Remove all watches, rings, bracelets or other metal objects. Use only tools with insulated handles.
- ☞ Do not dispose of batteries in a fire. There is a danger of explosion. Do not dispose of batteries in an environmentally unfriendly manner. Batteries may be returned to VitalSine for proper disposal.
- ☞ Do not open or mutilate the batteries. This may release electrolyte that is toxic to the environment and harmful to the skin and eyes.
- ☞ The individual performing the battery replacement is responsible for ensuring the old battery kit is disposed of properly (i.e. sent to a reputable recycler for proper disposal).

If you have read and understood the cautions preceding this section, you may proceed with the following steps.

For further inquiries, please contact us at:

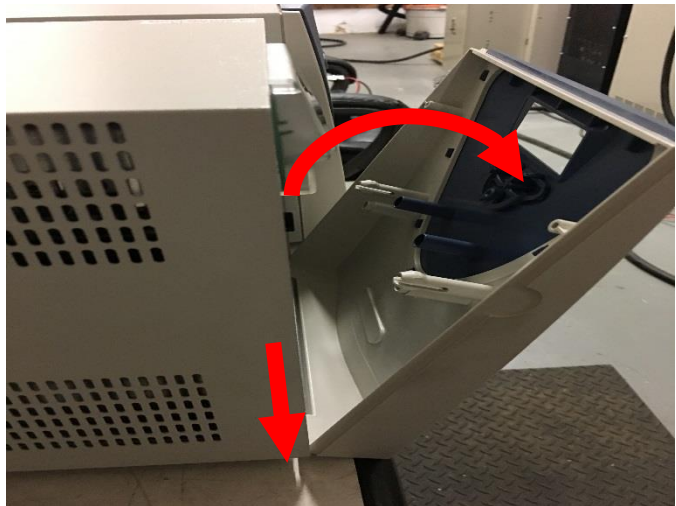
VitalSine Inc.
900 Windmill Road, Unit 303
Dartmouth, NS B3B-0J7
Tel: 902-835-0497
Fax: 902-835-4530
Toll Free: 877-500-6937
www.vitalsine.ca

1. Locate the finger holds on both sides of the UPM.

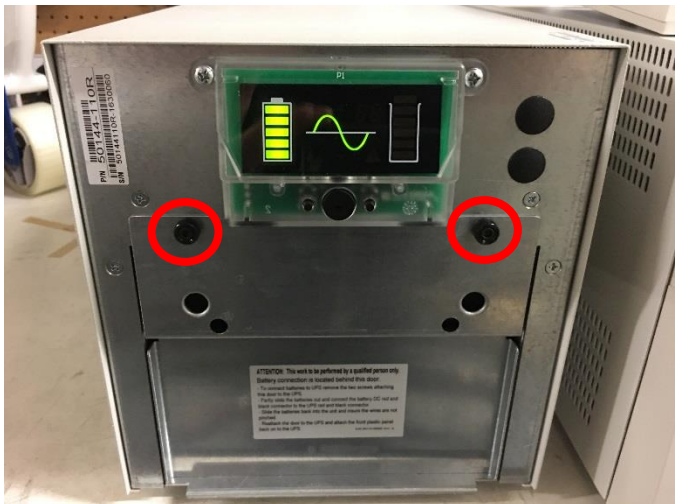


2. Gently pull the top of the cover away from the UPM.

NOTE The bottom of the UPM is still connected via tongue & groove. Lower the bottom of the front cover, and place it to the side.



3. Remove the two thumb screws securing the Battery Cover, and remove the Battery Cover.



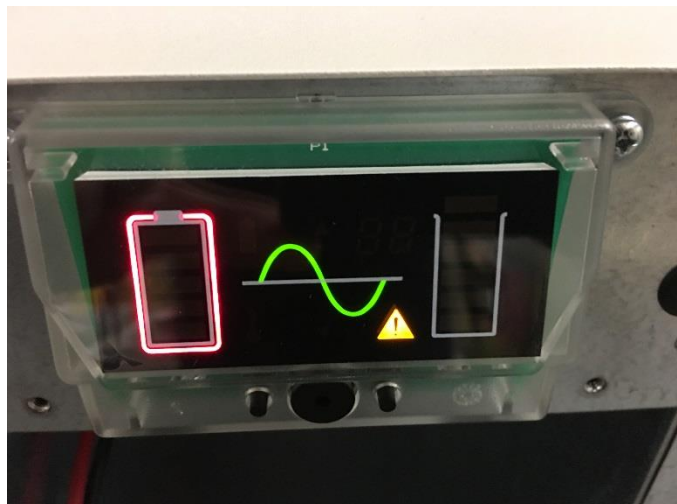
- Using the Battery Pull Tab, pull the old battery kit out partway to access the battery connector.



- Once the battery connector is accessible, disconnect the old battery kit and remove it.



NOTE Once the old battery kit is disconnected, the UPM will begin beeping, and show a red border around the battery indicator, along with the "Fault" light. This will continue until the new battery kit is connected.



- Slide the new battery kit into the UPM part way, allowing access to the battery connectors.

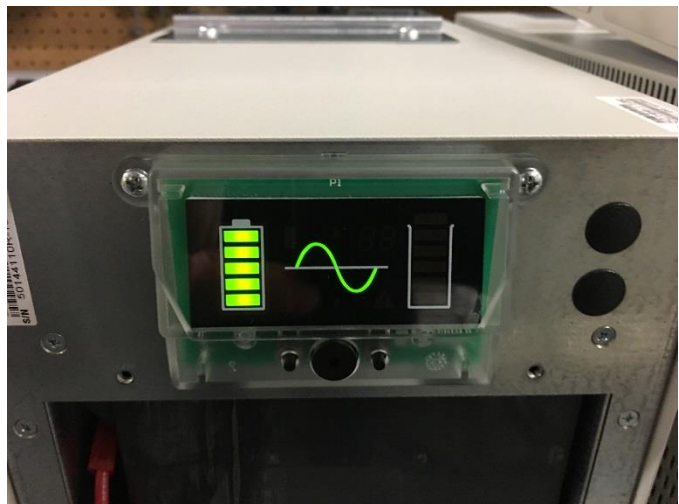
NOTE It may be necessary to hold the UPM's battery connector while inserting the new battery kit to ensure it remain accessible.



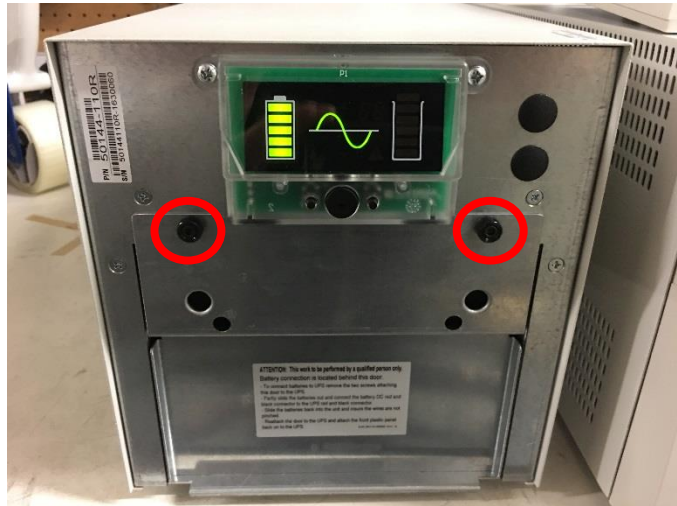
- Connect the battery connectors, and fully insert the battery kit.



NOTE once the new battery kit is connected, the UPM display will return to normal.



8. Install the Battery Cover, and secure it with the two thumb screws.



9. Reconnect the front cover by aligning the bottom groove first, and rotating the cover upward. Gently apply pressure to secure the cover.



10. Affix the "Replace By" label to the UPS.

If MopUPS software is being used with this UPM, please see the below steps to update the "Date Last Replaced" field.

1. Open MopUPS software
2. Select "UPS" from the top of the screen
3. Select "Configure UPS"
4. Under the "Battery" tab, change the "Date Last Replaced" to today's date.
5. Select "Apply to UPS" on the right-hand menu.